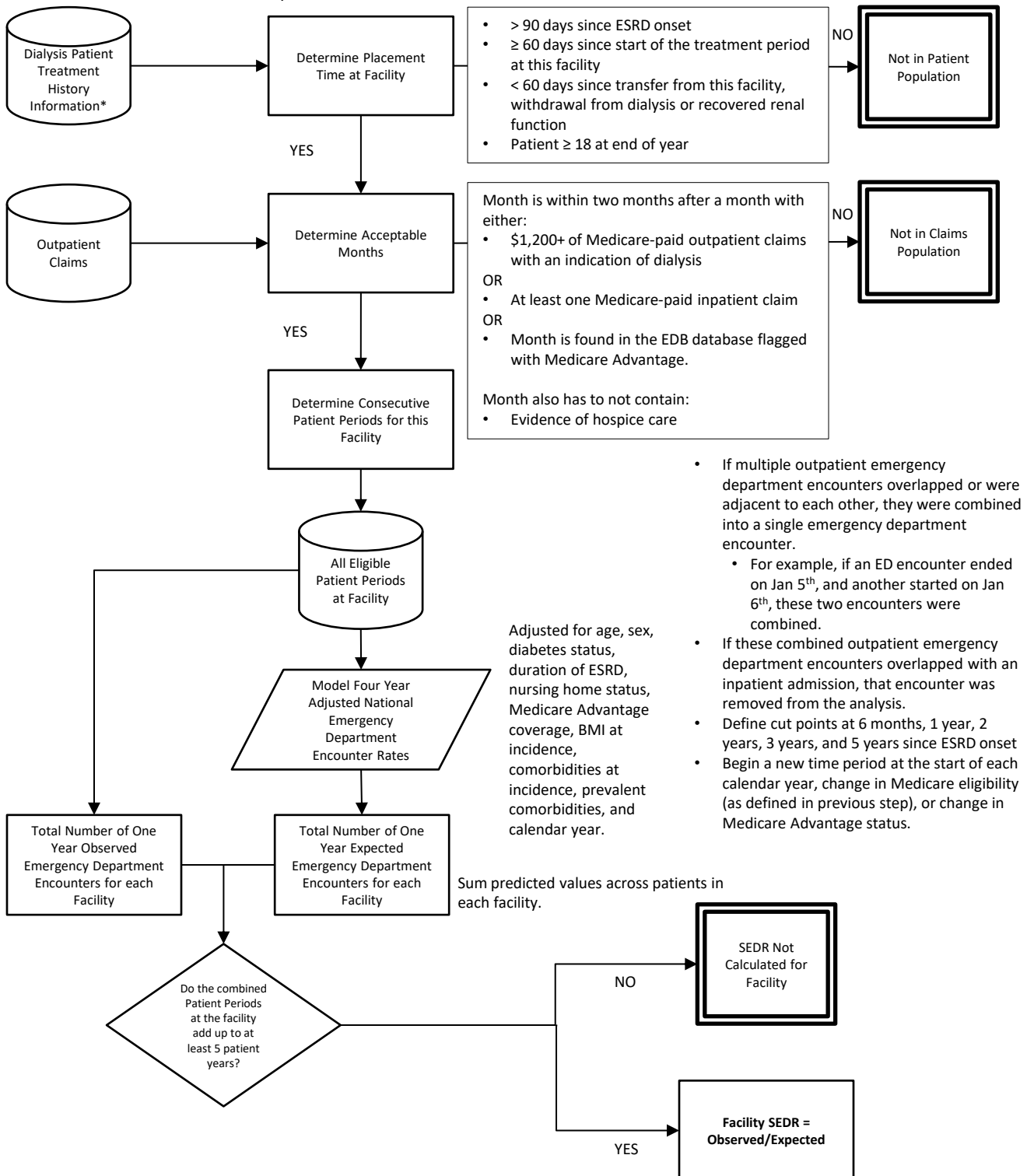


1.18a Calculation Algorithm/Measure Logic Diagram.

Standardized Emergency Department Encounter Ratio (SEDR): The ratio of observed to expected emergency department visits (that do not result in an admission)

Numerator Statement: Number of emergency department visits (that do not result in an admission) observed

Denominator Statement: Number of emergency department visits (that do not result in an admission) expected based on the national rate for patients with similar characteristics



*Multiple data sources include CMS EQRS patient-specific clinical and administrative data, the CMS Annual Facility Survey (Form CMS-2744), Medicare dialysis and hospital payment records, the CMS Medical Evidence Form (Form CMS-2728), transplant data from the Organ Procurement and Transplant Network (OPTN), the Death Notification Form (Form CMS-2746), the Dialysis Facility Compare (DFC) and the Social Security Death Master File.